

Jan/Feb 2017 Edition 95

# Gassy Gossip



First River flow for 2017 - under the newly built Killili Bridge at Gascoyne Junction river crossing.

PROUDLY PUBLISHED AND PRINTED BY

Photo by: Blanche Walker





# Strategic Community Plan - Community Input

## Strategic Community Plan - Community Input

On 26<sup>th</sup> April, 2013, the Shire adopted its first Strategic Community Plan based on input from community members both from surveys completed and the results of a public meeting held on 7<sup>th</sup> December 2012.

This process identified the Bridge over the Gascoyne River as being a major piece of infrastructure that the community wished to see constructed. Although this document was no guarantee that the bridge would be built, it did demonstrate to the Government that the bridge had community support. As can be seen this is a very powerful document as such we need to make sure that the coming review is well thought out and as many community members as possible have their input considered.

We need your help to make the next Strategic Community Plan (2017/18 to 2026/27).

What do you want our Shire to look like now, 2017 and into the future 2027?

What is special about Gascoyne Junction?

How can we improve the Shire for its residents?

## Have your say:

Complete the survey in this Gassy Gossip and return by Friday 16<sup>th</sup> March

Attend the community meeting to be held 26<sup>th</sup> April 2017

Community involvement is essential to plan for the future our residents want.

Please only fill out the survey provided or follow the link below.

<https://www.surveymonkey.com/r/6XCPP5Y>





## **2017 COUNCIL MEETING DATES**

Wednesday 22<sup>nd</sup> February 2017

Wednesday 29<sup>th</sup> March 2017

Wednesday 26<sup>th</sup> April 2017

Wednesday 24<sup>th</sup> May 2017

Wednesday 28<sup>th</sup> June 2017

Wednesday 26<sup>th</sup> July 2017

Wednesday 30<sup>th</sup> August 2017

Wednesday 27<sup>th</sup> September 2017

Wednesday 25<sup>th</sup> October 2017

Wednesday 29<sup>th</sup> November 2017

Friday 15<sup>th</sup> December 2017

All Audit Committee meetings commence at 8.00am. Council meetings commence at 8.30am. All meetings will be held at the Shire Council Chamber, 4 Scott Street, Gascoyne Junction.



## **Biting insect and mosquito-borne disease risk increase across Western Australia**

The Department of Health is warning residents and travellers to take precautions against biting insects following the widespread rainfall and recent flooding events across Western Australia.

Managing Scientist Environmental Health Hazards, Dr Michael Lindsay said the wet weather and flooding had created ideal conditions for breeding of mosquitoes and other biting insects across much of WA.

"While local government mosquito management programs are in place around WA, it is not realistic or logistically feasible to keep mosquitoes and biting flies below nuisance levels when such vast areas of the State are affected with the recent weather conditions," Dr Lindsay said.

"Increased mosquito activity is likely to result in an increased risk of the mosquito-borne diseases Ross River virus (RRV), Barmah Forest virus (BFV), Murray Valley encephalitis virus (MVEV) and Kunjin virus (KUNV) in some parts of WA."

Symptoms of infection with RRV and BFV include painful or swollen joints, sore muscles, skin rashes, fever, fatigue and headaches.

The warning comes as KUNV was recently detected in a sentinel chicken flock in the Pilbara. KUNV belongs to the same group of viruses as MVEV, both of which can only be transmitted by mosquitoes and are more common in northern regions of WA.

Dr Lindsay said for most people, disease caused by MVEV and KUNV had fairly mild symptoms such as headache, fever, aching, swollen joints and rash. However, in rare cases these viruses, especially MVEV, can lead to a serious inflammation of the brain and result in long term disability or even death.

"There are no specific cures or vaccines for mosquito-borne diseases in Western Australia, so it is very important that people take care to prevent being bitten," he said.

An increase in the number of March flies has also been reported in the Pilbara region. At least one species of March fly, known to occur in parts of the Pilbara and northern Goldfields, has a bite that can cause serious allergic reactions in some people.

"Although March flies are not known to transmit diseases to humans in Australia, the bites of some species can cause allergic reactions, including skin redness and swelling. In rare cases, people may also experience serious symptoms such as hives, fever, wheezing and even anaphylaxis which requires urgent medical attention", Dr Lindsay said.

People living or travelling throughout Western Australia do not need to change their travel plans but should take extra precautions to avoid being bitten by mosquitoes and flies, including:

- avoiding outdoor exposure particularly around dawn and dusk (and the first few hours after dark)
- wearing protective (long, loose-fitting, light coloured) clothing when outdoors
- applying a personal repellent containing 20 per cent diethyl toluamide (DEET) or picaridin to exposed skin or clothing. The most effective and long-lasting formulations are lotions or gels. Natural or organic repellents may not be as effective as DEET or picaridin, or may need to be reapplied more frequently
- wearing head nets if outdoors
- ensuring insect screens are installed and in good condition – the use of bed nets when sleeping will offer further protection
- using mosquito nets or mosquito-proof tents when camping or sleeping outdoors
- ensuring infants and children are adequately protected against biting insects, preferably with suitable clothing, bed nets or other forms of insect screening.

The recent rainfall is also a timely reminder for residents to minimise mosquito breeding around the home by taking some simple steps to remove or modify breeding sites such as:

- disposing of all containers which hold water
- stocking ornamental ponds with fish and keeping vegetation away from the water's edge
- keeping swimming pools well chlorinated, filtered and free of dead leaves
- filling or draining depressions in the ground that hold water
- fitting mosquito proof covers to vent pipes on septic tank systems and sealing all gaps around the lid and ensure leach drains are completely covered
- screening rainwater tanks with insect proof mesh, including inlet, overflow and inspection ports
- ensuring guttering does not hold water
- emptying pot plant drip trays once a week or fill them with sand
- emptying and cleaning animal and pet drinking water bowls once a week.

For more information on how to prevent mosquito bites visit:

<http://healthywa.wa.gov.au/fightthebite>

## What's Parks and Wildlife doing in the Shire

By Gary Hearle

Welcome back to another year. I hope you all had a Merry Christmas and are looking forward to a happy and prosperous new year.

In mid-November we participated in the aerial baiting program for wild dog control – coordinated by the Carnarvon Rangelands Biosecurity Association Inc. Nine thousand baits were dropped over the Kennedy Range. **Thank you to Eric 'Rolo' Roulston (Norwest Air Work) and Adam Robinson (Licensed Pest Management Technician)** for their efforts.



*Adam ready to drop baits on Kennedy Range.*



*Cocklebiddy fire from Eyre Bird Observatory.*

I attended the last Local Emergency Management Committee meeting in Gascoyne Junction. This meeting involved a desk top exercise with several departments working on a response to a theoretical scenario.

Gavan Mullan and I were dispatched for a week to assist in combating a bushfire at Nuytsland Nature Reserve - which is near Cocklebiddy on the Eyre Highway. The aim was to prevent it affecting the Eyre Highway. Wind changes and access were a challenge at this location. Control efforts were successful and assisted by rainfall.

Gavan attended the opening of Killilli Bridge in December. Congratulations to the shire on such a successful project.

Gavan completed annual visitor risk inspections of Kennedy Range and Mt Augustus national parks just before Christmas. This work involves review of the physical risks which visitors may experience and also the information available to visitors. The main concern continues to be visitors arriving in the hotter months and who fail to heed warnings about the heat before setting off on a walk trail. Gavan also attended to some management items at former Cobra and Waldburg pastoral lease properties.

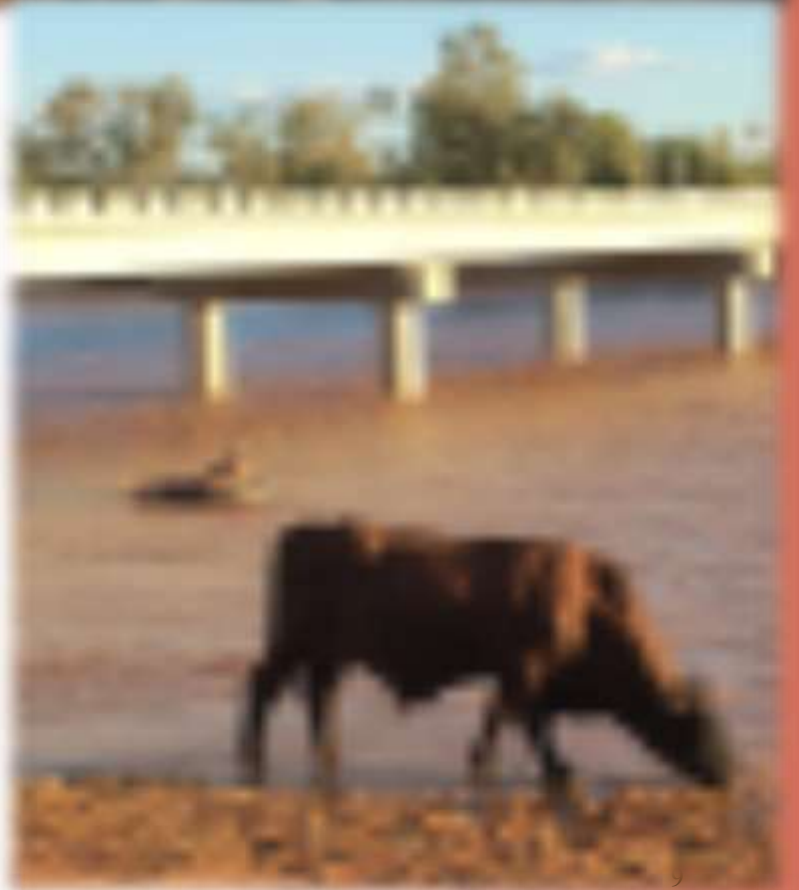


Dustin and Bridie Walker. *"Oh no" do we have to go to school today!*



Some of the Locals guys having a little fun - floating down the river on tubes on a nice searing steamy hot afternoon.





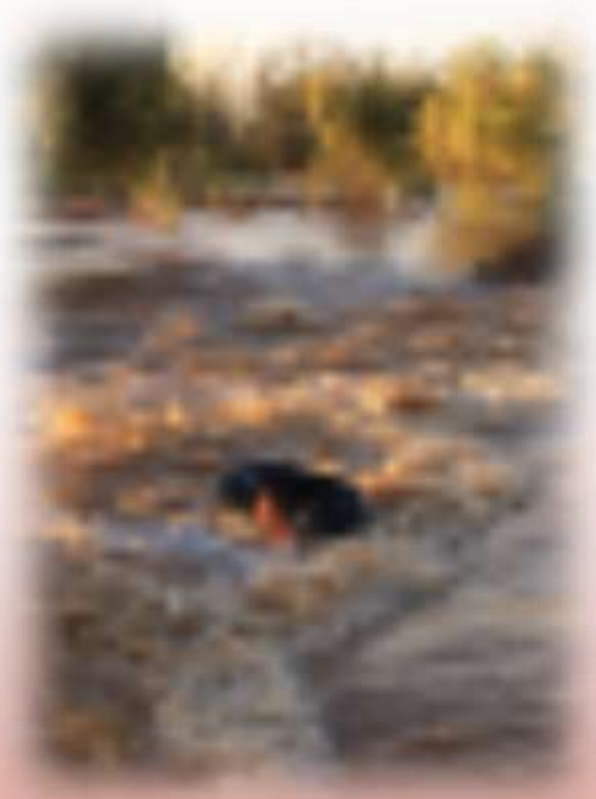
Time for refreshments



Dustin & Jarrod down at the yarning spot where the guys started their tube ride.



Deb Betham & little Zander



Nat at the end of the tube ride.



Michael Emin, Shaun Mitchell and Nat Rogers.





Dustin Walker, Cooper Capewell and Bridie Walker, Mmmmm what can we throw in that water.



Nat Rogers & Shaun Mitchell having a great time - just going with the flow!

# River on



*River on the rise this morning - 17 February 2017*

# the Rise



*Killili Bridge*



## Rangelands Landscape Reading and Rehydration Workshop

The Rangelands Landscape Reading and Rehydration workshop, presented by Professor Hugh Pringle, was held at Mt Augustus Station on 9<sup>th</sup> & 10<sup>th</sup> December 2016. This was a great workshop with a mix of classroom and practical sessions enabling group learning and many 'a-hah' moments reading the rangelands together.

Andrew Watson, the Commissioner for Soil Conservation in WA, gave a short presentation on the condition of the southern rangelands. It was good to hear of Andrew's considerable knowledge. He can now take the message back to Perth that we pastoralists are being proactive in our soil conservation efforts.

### In the classroom and the paddock

Topics covered included the critical importance of fertile patches in the landscape. These are the run-on areas of rangelands that drive pastoral productivity. The process of losing these areas is depicted in the attached diagram. Out in the paddock we saw situations where these fertile patches are being drained or are under threat of drainage. We then had the opportunity to problem-solve by suggesting interventions to address these drainage problems.

There was a lot of discussion of grazing management and its effect on landscapes. Rest from grazing is vital for recovering a lot of degraded landscapes. This can be simply resting a paddock for the wet season or the various rotational grazing systems. All require control of total grazing pressure to enable the perennial grasses and other ground-cover perennials to establish and expand. It is the perennial ground-cover plants that drive rainfall infiltration rates; they also regulate the speed at which water flows across the land. Grazing management can be a valuable ecological tool used wisely.

Hugh gave a clear summary of how arid landscapes function, how the various parts fit together and where the water should flow when it works for us, and where it goes when it's not. In well-functioning landscapes, rainfall is largely stored in the soil close to where it falls. This is where it grows feed for us and recharges our water storages.

The workshop was all about practical application of knowledge. To do this, Hugh studied satellite images of problem areas and went flying with the Hammarquist's to better understand the landscape issues to be addressed. The reconnaissance flights informed where we went on the ground. Such flights are a vital step in addressing rangeland degradation, because the consequences of degraded landscapes are generally caused by problems upstream, often kilometres away.

Matt Hammarquist has been busy using ponding banks to maintain and improve the productivity of significant areas of Mt Augustus. Not all his banks have worked, but many have. Work or not, they all provided important lessons for workshop participants. Using Matt's banks as an example, Hugh was able to point out aspects of bank design, position, purpose and effect; most of which can only be learnt through doing it yourself, or benefitting from the critique of someone else's work like this.





*Discussing a working ponding bank. This ponding bank and related earthworks have had a dramatic effect on perennial grass growth around it. Given the dried off grass cover we could see, and being conservative, if this bank only had a positive effect over 500ha at a 30% utilisation rate, it would carry an additional 137 Adult Equivalents (AE = 450kg dry animal). At \$2/kg, that could be an added net income of \$123,300. Would that pay for your bank?*

The concept of sieve structures was broadly discussed as they have application in many places where earthworks are not appropriate. We saw many possible locations where sieves could be used to manage erosion issues as well as to enhance the effect of existing banks. Hugh repeatedly emphasised that there are usually several viable options to rehydrate rangelands and often it is simply a personal preference. BUT it must achieve clearly identified objectives.

No matter what sort of work you undertake, Hugh reinforced the principle of working with natural sequences and patterns as much as possible. It is much easier and cheaper to reinforce the existing patterns of watershed through the landscape, as opposed to attempting to force drainage in new directions.

Hugh also gave us a short session on the Ecosystem Management Understanding (EMU) planning system. This is an exercise where local knowledge of landscapes is recorded on clear overlays on a property map. The bringing together of local knowledge, station infrastructure and natural systems aids the understanding of landscape problems adversely affecting production. This was a great session for the participants. In particular it clarified the interconnectedness of key sites needing attention.

## Roads

Because of their huge potential effects on rangeland productivity, best practice road construction and maintenance for the rangelands was also covered. Once pointed out, the deficits in our road construction and maintenance stand out. Many station and Shire roads are currently droughting and killing sections of rangeland. Poorly constructed roads often divert water, initiating erosion by concentrating water. Sometimes they hold up water causing reduced trafficability for longer than necessary after rainfall.

'Let it go, let it flow!' is a catchcry that best describes how road drainage should be managed. Where possible, natural water flows should be able to cross roads to maintain pastoral productivity. Well-constructed roads that allow the natural flow of water cost less to maintain, are more trafficable sooner after rain and are less destructive to rangeland environments. Best practice road construction and maintenance include:

- Ensuring there are no windrows on any road. The edge of a road should be smoothed, allowing water to maintain natural flow patterns, thus ensuring land is not droughted. Windrows also concentrate water and flows, causing erosion and washouts, adversely affecting trafficability where water concentrates.
- All drains should have flat bottoms. V-drains concentrate and energise water, creating erosion. Conversely, flat bottom drains de-energise and spread water by discharging it over a level sill. This can re-establish natural water flow and reduce erosion. Flat bottom drains are also easier to install and maintain. They are also more efficient carriers of water.
- Diversion banks (also known as whoa-boys) that run into flat bottom drains are the most efficient structure to move water off a road. Whoa-boys prevent water gaining erosive force and then allow it to be released to reinstate natural flows.

We inspected gully erosion caused by the old Woodlands Road, unused for 20+ years. It has created a series of gullies that are drying out large sections of surrounding rangeland as well as droughting areas that previously enjoyed sheet flow. This was moderate production country so conservative figures to put on this are adverse effects over 1,500ha with country that should grow 600kg/ha of feed compared to 20kg/ha of feed now. The difference is that the capacity to run 80 AEs has been lost. At \$2/kg that's a net loss of \$72,000 year on year.

## Summing up

A key feature of the workshop was the group learning. We had pastoralist participants with substantial successful records of Rangeland Rehydration sharing their knowledge and suggesting innovative, alternative solutions to complex challenges. This community knowledge networking is pivotal to enhancing rainfall use efficiency in rangelands.

More information on rangeland landscape reading and rehydration is available in the *Rangeland Rehydration Field Guide*. This publication aims to 'provide a guide for ecological management of rangelands, based on drainage, with some tools to repair them' and promotes management actions 'where the degree of success is high and the treatment cost-effective'. As such it is a very good reference for any rangeland manager and is available on the EMU website here: <http://www.emuproject.org.au>. A manual produced by Hugh Pringle for Namibia on farm road planning and management is highly relevant and freely available on request from Hugh at [hpringle1@bigpond.com](mailto:hpringle1@bigpond.com).

Many thanks go to Hugh Pringle for passing on some of his expertise. The support of Rangelands NRM WA for this Upper Gascoyne LCDC hosted event is greatly appreciated, as is National Landcare Program (NLP) funding. Thanks also to the Foundation for Rural & Regional Renewal and the Western Australian Community Foundation Charitable Trust for part funding of the workshop. And to Lastly, thanks also to the Hammarquist family, especially Don and Matt, of Mt Augustus Station for allowing access to, and critique of, their landscape and conservation work and for hosting this excellent workshop.

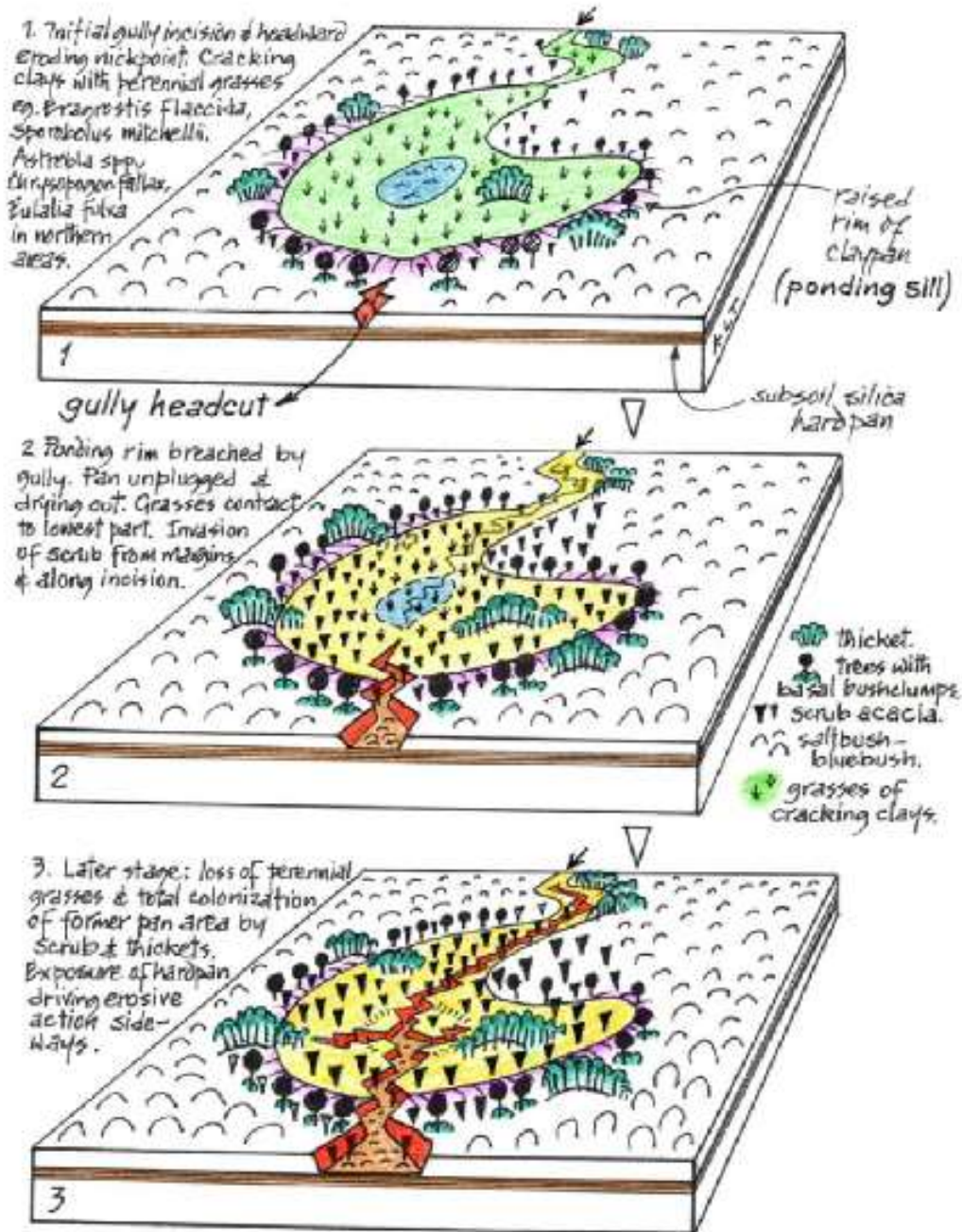


Diagram from the *Rangeland Rehydration Field Guide* of a gully nickpoint breaching of a panning sill; transforming a seasonal wetland perennial grass habitat to dryland scrub.



**Inspecting a thief, stealing water and pastoral productivity.** This gully head erosion will shortly begin eating into a station track and is about 100m down-stream from a wetland perennial grass habitat. Left unattended, it will destroy the wetland above it.

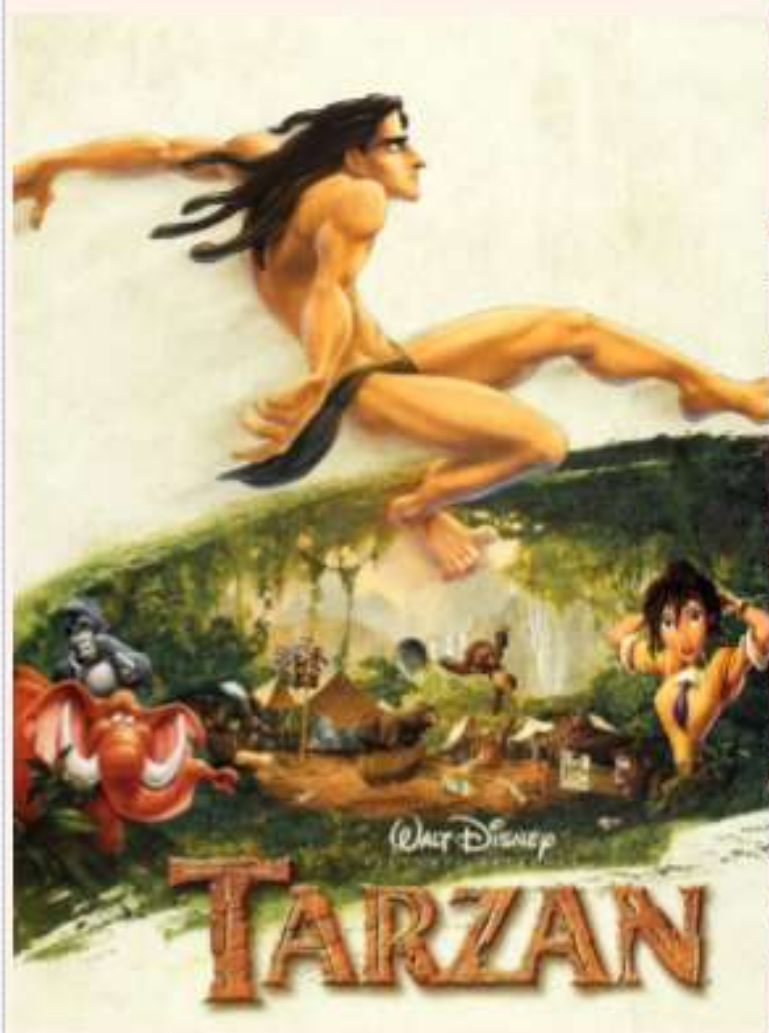


**A small working crabhole system, about 10ha, under threat from the above thief.** This is an example of a wetland perennial grass habitat represented by the diagram above. Hugh Pringle describes such wetlands as 'Gems' or 'Vitamin pills' in the landscape because of the way they boost the productivity and carrying capacity of rangelands.

This project is supported by funding from the Western Australian Government's State NRM Program, supported by Royalties for Regions.

# PICTURES IN THE PARK

## FREE FAMILY FUN!



Come join us down at the Gascoyne Junction Pavilion for Pictures in The Park.

**Movie:** Tarzan

**Time:** Movie begins at dusk

**Date:** Friday 03/03/2017

Bring your lawn chair or blanket and settle in for a fun night with friends and family under the stars.

Food not available but you can bring a snagger or steak down to throw on the barbie or simply bring along snacks for yourself.

Children must be accompanied by a parent or adult as we will not take responsibility.

For more information please call Robyn or Blanche at the Gascoyne Junction Community Resource Centre or email [crcso@uppergascoyne.wa.gov.au](mailto:crcso@uppergascoyne.wa.gov.au)



## Newsletter

03/02/2017

### PRINCIPAL'S POST

Dear Parent and Carers,  
I hope you all enjoyed a relaxing holiday and welcome you back to the 2017 school year.

Peter and I have returned from our wonderful adventure and look forward to a busy, rewarding year at the Junction.

We are happy to welcome Ms Lee Gaitskell to join Peter and Myself as teaching staff at the school.

Ms Gaitskell continues in her role as Early Childhood teacher in room one whilst Mr Peter Polakiewicz

(Mr Pete) returns to the upper school in room two.

We also welcome Deb Betham on board as our school deaner and hope she enjoys her role. To date Deb has battled the elements to ensure all is spic and span for the commencement of the school year.

Beth has worked at the school for a number of years. She has tirelessly scrubbed, mopped and vacuumed through the heat, floods and winds to present a well cleaned learning and work environment for staff and students.

We all wish Beth and Muzz the best of luck in Kalbarri. Thank you Beth, we will miss you.

#### **An Information Evening**

for all parents of enrolled students is scheduled for

**15th February at 6:00pm.**

This is an opportunity for you to learn about the education programme in which your child is engaged, systems and processes that are in place in each class and how behaviour will be managed in that class.

Parent representatives of our newly formed School Council are:

Hamish McTaggart

Stephen Chong Wee and

Deb Betham.

Together with Leila Gaitskell and Chris Polakiewicz the

Gascoyne Junction School Council plans strategic directions for the school.

Please remember you are welcome to see me at anytime, just call Jen on 9943 0515 to advise.

'Til next time,  
Chris Polakiewicz  
*Principal*

## Early Childhood Class - Room 1

Miss Lee is busy organising and engaging students on an educational theme based around **water**. Students will estimate, measure, investigate, plan and learn how to conserve water. This reflects our value of respect as students explore how to become a water wise school.



## Upper School Class - Room 2



Mr Peter has been busy this week organising our brand new HUGE ipads.

As part of the strategic plan for 2016, staff at Gascoyne identified a need to improve our information and computer technology. These ipads are part of the equipment that was purchased to address this need. There are other IT resources that will soon be available to all students. Mr Pete is REALLY looking forward to having his students arrive soon!!

# BUILDING UPDATE

### **Basketball court cover;**

The Basketball court is almost complete and looking great, the students are really looking forward to exercising under all that shade! We are just waiting on the basketball backboard and the safety padding for the posts.

### **Outside fitness equipment**

When the weather cools you can exercise in the park!! Come on down and get yourself all "buffed up" and ready for the Pink Stumps Day.

### **Soft fall under the playground equipment**

This feels a little like walking on the moon. Safety of students is the reason for this acquisition.

### **The Milo Room**

The Milo room looks very flash. New sink, cupboards and stove means students who excel in academic achievement and values education can relax and enjoy the result of their efforts in style.



## PLAYGROUP

In 2017 playgroup will run three days a week in recognition of the importance of the Early Years in Education.

In the first instance, early childhood qualified teacher and Principal, Chris Polakiewicz, co-ordinates the programme with assistance from parents. Over a week or so this will gradually evolve into a programme supported by Playgroup WA and run by parents.

The programme runs on Monday, Wednesday and Friday from 9:00am to 11:30am. Children from 0-3 and their carer's are welcome to attend sessions. Should you choose to participate in the programme, please ensure your child has a hat, a piece of fruit, or cheese, carrots celery (to be shared) and a bottle of water.

Playgroup is a great way for children to socialise, parents learn more about children's education and child development. It is a forum where various service providers can be invited to present information as required.

The timetable is such that the playgroup students will have the opportunity to socialise and engage with school students (at recess time) and to have dedicated time as an independent group.

The playgroup programme is very flexible and run to suit the needs of all children.

Please, if you would like to be involved in running the programme or assisting with co-ordination, suggestions or implementation call me on 9943 0515.

We look forward to meeting all children and parents on the days that best suit you.



## Term 1 Calendar of Events 2017

Mon	Tues	Wed	Thurs	Fri
23 Jan	24 Jan	25 Jan Admin staff return	26 Jan <b>PUBLIC HOLIDAY</b>	27 Jan Admin staff
30 Jan Teaching staff return School Development Day	31 Jan Teaching staff return School Development Day	1 Feb Students return	2 Feb	3 Feb <b>NEWSLETTER</b>
6 Feb	7 Feb	8 Feb Staff Meeting	9 Feb	10 Feb
13 Feb On entry assessment can begin this week until 10 <sup>th</sup> March for PP students	14 Feb	15 Feb Information Evening 6:00pm	16 Feb	17 Feb Census
20 Feb Playgroup Commencement School Council 4:00pm	21 Feb	22 Feb Staff & Finance Meeting	23 Feb	24 Feb Assembly
27 Feb Population Health visit	28 Feb	1 Mar	2 Mar	3 Mar <b>NEWSLETTER</b>
6 Mar <b>LABOUR DAY</b>	7 Mar W.A. State Elections Polling booth at School	8 Mar Staff Meeting	9 Mar	10 Mar End of on entry assessment for PP students
13 Mar	14 Mar	15 Mar	16 Mar	17 Mar
20 Mar	21 Mar	22 Mar Staff Meeting	23 Mar	24 Mar Assembly
27 Mar	28 Mar	29 Mar	30 Mar	31 Mar <b>NEWSLETTER</b>
3 Apr	4 Apr	5 Apr Staff & Finance Meeting	6 Apr	7 Apr Last day of Term

# WALGA RoadWise Report



## Gascoyne

### Statistical data

February/March 2017

*Towards Zero* means we do not accept that any human being should die or be seriously injured on our roads

Deaths year to date

14 deaths as at 1 February 2017 – 9 Metropolitan WA, 5 Regional WA

Figures taken from Road Safety Commission website [www.rsc.wa.gov.au](http://www.rsc.wa.gov.au).

### Safe speeds

Vulnerable road users and speed

As children start the new school year, we all need to remember that school zones are once again in operation. However, it is not only in school zones that drivers need to take extra care but also in other areas where vulnerable road users such as pedestrians and cyclists interact with vehicles.

To increase safety in these areas some Local Governments have been working with the community and road safety stakeholders to reduce vehicle speeds. This includes traffic calming, speed limit reductions, targeted enforcement, promotion and education.

A new Bike Boulevard has been created on Shakespeare Street in Mount Hawthorn by the City of Vincent. Bike Boulevard users are not fast cyclists; they are mums, dads, children, senior citizens and others making short trips on bikes to school, the train station or shops. Bike Boulevards are located on local streets with low traffic volumes and low speeds. The aim is to enhance the street environment to make bike riding and walking safer by making cars travel at lower speeds. Other Bike Boulevards being trialled include Leake Street and May Street in the City of Bayswater and Surrey Road in the City of Belmont<sup>1</sup>.

The City of Joondalup is participating the Department of Transport's 2015 Connecting Stations Project. Stage 1 commenced in 2015/16 with construction of a separated bike and pedestrian path linking Robertson Road reserve with Greenwood Train Station. Stage 2, to continue the path to Lake Goollelal is scheduled for 2016/17<sup>1</sup>.

Each year, City of Wanneroo reviews the provision of speed and pedestrian infrastructure around all schools to identify any improvements or changes necessary. The City regularly reviews road user behaviour around schools by completing traffic counts and identifying roads where speeding is a significant problem requiring referral to WA Police for enforcement<sup>2</sup>.

<sup>1</sup> Department of Transport, *Safe Active Streets Program* [www.transport.wa.au](http://www.transport.wa.au) accessed 09/01/2017.

<sup>2</sup> City of Wanneroo RoadWise Working Group Agenda 14 December 2016.

#### CONTACT

Engel Prendergast – Senior Road Safety Consultant

t: 9213 2060

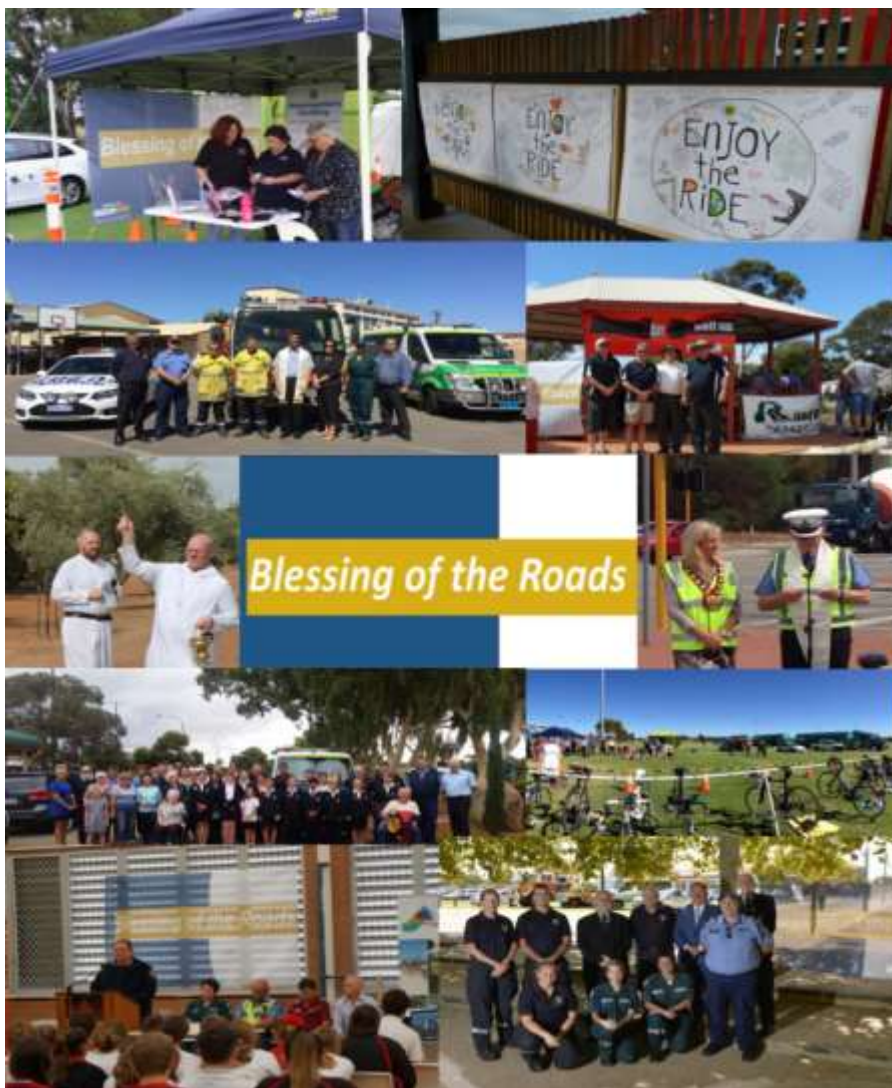
e: [eprendergast@walga.asn.au](mailto:eprendergast@walga.asn.au)

## *Blessing of the Roads*

*Blessing of the Roads* is a state-wide community road safety awareness campaign. Traditionally the campaign is run in the lead up to and during the Easter long weekend. This is a time when many people travel long distances to visit family and friends, taking advantage of the four day holiday.

The *Blessing of the Roads* campaign is aligned with *Towards Zero, WA's road safety strategy 2008-2020*, which has a long term vision of a road transport system where crashes resulting in death and serious injury are virtually eliminated. The campaign aims to engage local leaders and the community to create a positive road safety culture. The campaign is non-denominational and can be embraced from a non-religious perspective.

WALGA RoadWise develops a kit to assist Local Governments and other organisations to implement and promote *Blessing of the Roads* activities and messages. The 2017 Kit is now available.



*Pictured above Blessing of the Roads events 2016 (clockwise from top left): Cities of Swan, Stirling and Joondalup; Shire of Esperance; Shire of Cranbrook; City of Wanneroo; City of Kalgoorlie-Boulder; City of Rockingham; Shire of Plantagenet; Shire Bruce Rock; Shire of Victoria Plains (New Norcia); and Shire of Carnarvon.*

For more information about how you can be involved please contact me or visit <http://www.roadwise.asn.au/blessing-of-the-roads.aspx>

# Look what's for sale in the CRC



*Assorted Gifts For Sale.*

*Beautiful candles, Clocks,  
Paintings*

*Metal Wall Art & More.*



*Manicure Set & Coasters*



*Bicycle Pot Plant  
Holder*



*And lots more .....*



*Mulla Mulla  
Painting*



*Horse or Car Ornament.*



*Fancy Tea light Candle  
Holders, Set of Owls  
etc.....*

# Gassified

## In Memory



*It is with regret that the shire has lost one of its former Councillors*

*Mrs Inge Stocks.*

*Inge was a councillor for 15 years as well as a*

*Much respected Community Member.*

*Our sincere sympathy goes*

*Out to Bill and the family.*

## In Memory

*The Shire is deeply saddened by the passing of long time resident.*

*Rodney Drage*

*Our sincere sympathy*

*to*

*Jodie & the Drage family*



### January

3 Ella Hoseason - Smith

3 Hazel McTaggart

17 Nat Rogers

### February

3 Robyn Perry

17 Dart Kempton

17 Judy McGregor

28 Cooper Capewell

### March

2 Jane McTaggart

2 Karen Coffin

6 Genevieve Robinson

9 Thomas Fletcher

20 Georgie Hammarquist

23 David Hammarquist

29 Patrick Starr



Got a Birthday coming up? Contact the Gassy Gossip by email at [crc@uppergascoyne.wa.gov.au](mailto:crc@uppergascoyne.wa.gov.au)

## Dinner Tonight



### Five-spice beef with sesame greens

#### Ingredients

- 600 g beef shin, cut into pieces
- 1 bunch spring onions, sliced
- garlic 3 cloves, sliced
- 1 thumb sized piece of fresh ginger, grated
- 2 red chillies, sliced plus extra to serve
- 2 tsp Chinese five-spice
- 1 star anise
- 2 tbsp brown sugar
- 4 tbsp rice wine or dry sherry
- 2 tbsp soy sauce (or gluten-free alternative)
- 200 g mixed of broccolini
- 200 g green beans
- 2 splashes sesame oil
- 2 tsp sesame seeds, toasted
- basmati rice steamed to serve

#### Method


Heat the oven to 160C/fan 140C/gas 3. Put all the ingredients except the greens, oil, seeds and rice in an ovenproof pot with a lid. Add 200ml water, stir well, then cover.

Cook in the oven for 2 hours or until the meat is really tender. If you want a thicker sauce, scoop out the meat and boil hard for 5 minutes. Steam the greens, beans and broccoli until tender, and toss with a little sesame oil. Serve the beef with basmati rice and greens, and scatter over the toasted sesame seeds and a bit more chilli for colour if you like.



### Hummingbird slice with lemon frosting

#### Ingredients

- $\frac{3}{4}$  cup self-raising flour
  - $\frac{1}{4}$  tsp bicarbonate of soda
  - 1 tsp ground cinnamon
  - $\frac{1}{2}$  cup brown sugar,  firmly packed
  - $\frac{1}{4}$  cup desiccated coconut
  - $\frac{1}{2}$  cup finely chopped pecans
  - 440 g can crushed pineapple in juice, well-drained
  - 2 eggs, lightly beaten
  - $\frac{1}{2}$  cup mashed banana
  - $\frac{1}{3}$  cup vegetable oil
- finely chopped pecans, to decorate

#### Lemon frosting

- 100 g cream cheese, at room temperature
- 25 g unsalted butter, at room temperature

#### Method

1. Grease an 18cm x 28cm rectangular slice pan. Line base and sides with baking paper, extending paper 3cm above pan edges.
2. Sift flour, soda and cinnamon into a large bowl. Stir in sugar, coconut and pecans.
3. Combine pineapple, eggs, banana and oil in a large jug. Whisk well. Stir into flour mixture until combined. Spoon into pan. Smooth over top.
4. Cook in a moderate oven (180C) for about 25 minutes, or until cooked when tested. Stand in pan for 20 minutes.
5. Transfer to a wire rack to cool completely.
6. To make frosting, beat cheese and butter in a small bowl of an electric mixer until light and fluffy. Gradually beat in sugar until combined. Beat in juice.
7. Spread frosting over top of slice.
8. Sprinkle with extra pecans.



# Smoko Corner

## Country Music Trivia Quiz.

1. "The devil went down to Georgia He was looking for a soul to steal He was in a bind 'cos he was way behind He was willin' to make a deal" This song became the signature song for which group?

2. This song tells the story of stealing a car from an assembly line "One Piece at a Time". Who had a hit with it in 1976?

3. Which singer had a hit with these lyrics in 1968? "I am a lineman for the county And I drive the main road Lookin' in the sun for another overload I hear you singing in the wire I can hear you thru the whine And the Wichita Lineman, is still on the line"

4. In the song "He'll Have To Go" what did singer Jim Reeves want the man to turn down?

5. Which singer had a crossover hit with these lyrics in 1975? "Have you never been mellow? Have you never tried to find a comfort from inside you? Have you never been happy just to hear your song? Have you never let someone else be strong?"

6. Who helped Toby Keith on "Beer For My Horses"?

7. Harold Lloyd Jenkins was the real name of what country star?

8. Who teamed up with Dwight Yoakam to sing 'Streets of Bakersfield'?

9. Loretta Lynn is from which state?

10. What was the profession of Tim McGraw's Father?



1. Charles Daniel Band. 2. Johnny Cash. 3. Glen Campbell. 4. Olivia Newton - John. 5. Willie Nelson. 6. Conway Twitty. 7. Buck Owens. 8. Kentucky. 9. Professional Basketball Player.

Answers:





# Gascoyne Junction Craft Group



## GASCOYNE JUNCTION CRAFT GROUP CALENDAR 2017

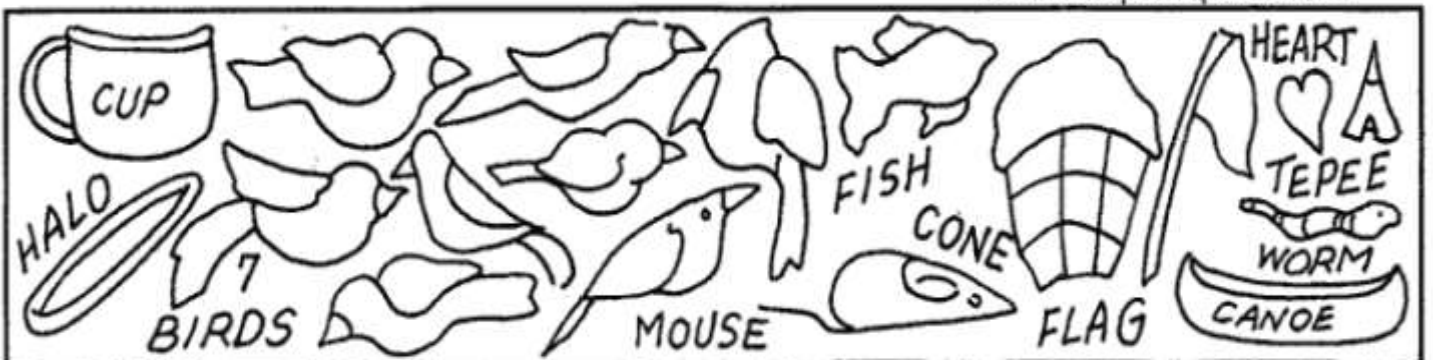
Jan	Untutored Craft Weekend
25 <sup>th</sup> and 26 <sup>th</sup> Feb	Untutored Craft Weekend
1 <sup>st</sup> and 2 <sup>nd</sup> April	Tutored Workshop
8 <sup>th</sup> April – 23 <sup>rd</sup>	April School Holidays and Easter
22 <sup>nd</sup> and 23 <sup>rd</sup> April	Dongara Autumn Craft Round Up
5 <sup>th</sup> and 6 <sup>th</sup> May	Untutored Craft Weekend
10 <sup>th</sup> – 12 <sup>th</sup> June	Music Festival
17 <sup>th</sup> and 18 <sup>th</sup> June	Untutored Craft Weekend
1 <sup>st</sup> July – 16 <sup>th</sup> July	School Holidays
29 <sup>th</sup> and 30 <sup>th</sup> July	Untutored Craft Weekend
2 <sup>nd</sup> and 3 <sup>rd</sup> Sept	Untutored Craft Weekend
23 <sup>rd</sup> Sept – 8 <sup>th</sup> Oct	School Holidays/Landor Races
14 <sup>th</sup> and 15 <sup>th</sup> Oct	Untutored Craft Weekend
2 <sup>nd</sup> and 3 <sup>rd</sup> Dec	Christmas Craft

For any queries please contact the Secretary  
Rachael Funnell

[rachelliott81@hotmail.com](mailto:rachelliott81@hotmail.com)

9943 0552

Find the Hidden Pictures, then colour the picture.





# DR SEUSS WORD SEARCH

R H Y M E S A B L U W M L M S  
T S N E E T C H E S E U C A S  
F A E L L I V O H W M L F Y S  
T P H T G Y I U M S O B X Z U  
Z H S E E R G E G Q L E N I E  
X R I R H T I G S H O R O E S  
B A T D M T E N O I H R T A D  
S L R L W N N P C L T Y R Z U  
E K E O E I O I E H R X O M C  
B A O E L N C S T A A Z H C Z  
Y A R O P E E K W A B G S I H  
C G F O B I H V Z O C H P D J  
M N P C G J A T D L A R E G M  
S C D J S P N N E M G P R G N  
I E X D V Q U A C N O V O R R

BARTHOLOMEW  
BOOKS  
CAT IN THE HAT  
GERALD  
GIESEL  
GREEN EGGS  
GRINCH  
HOP ON POP  
YERTLE



YERTLE  
HORTON  
MULBERRY  
RHYMES  
SEUSS  
SNEETCHES  
THE LORAX  
THIDWICK  
WHOVILLE

MONDAY	TUESDAY	WEDNESDAY	THURSDAY	FRIDAY	SATURDAY	SUNDAY
		1	2	3	4	5
6	7	8	9	10	11	12
13	14	15	16	17	18	19
20	21	22 Council Meeting	23	24	25 Craft (Untutored)	26 Craft (Untutored)
27	28					
		<b>NOTES:</b>				

## Upcoming Events

### March

3rd Pictures in the Park  
Gascoyne Junction

6th Labour Day

7th State Elections Polling  
Booth G J Remote School

29th Council Meeting

### April

1st & 2nd Craft Weekend  
(Tutored Workshop)

8th -23rd School Holidays  
& Easter Weekend

22nd & 23rd Craft  
Dongara Autumn Craft Roundup

25th ANZAC Day

26th Council Meeting